

ARTEMIS

INDUSTRY ASSOCIATION



**ADVANCED RESEARCH & TECHNOLOGY FOR EMBEDDED
INTELLIGENT SYSTEMS**

WHO WE ARE

ARTEMIS Industry Association is a membership organisation with more than 170 members and associates from all over Europe bringing together actors in Embedded Intelligent Systems within Europe. The multidisciplinary nature of the membership provides an excellent network for the exchange of technology ideas, cross-domain fertilisation and major innovation initiatives.

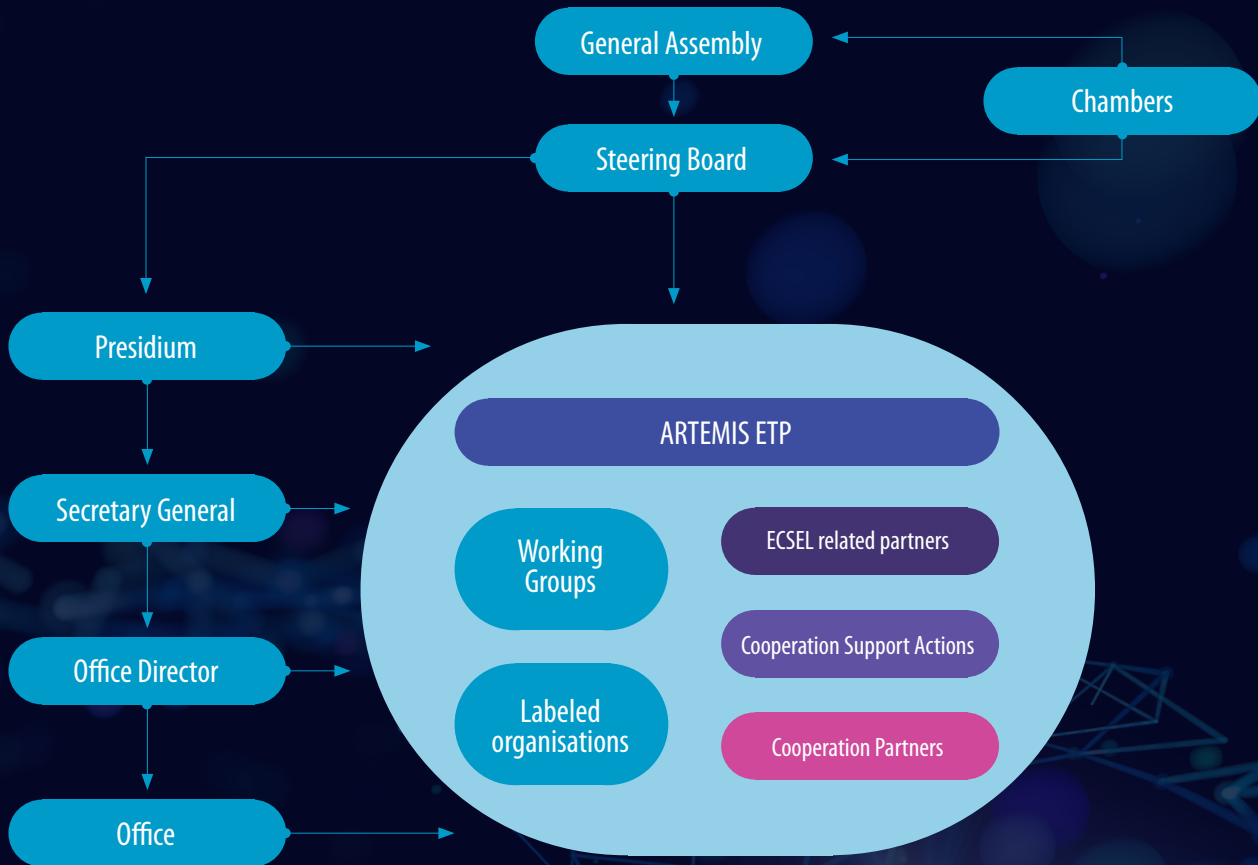
WHAT WE DO

- 1 ARTEMIS-IA **strives for European competitiveness**
- 2 ARTEMIS-IA continuously **promotes the R&I interests of its members** to the European Commission and the Public Authorities of the participating states
- 3 ARTEMIS-IA **stimulates innovation** for global impact and to eventually **improve day-to-day life**
- 4 ARTEMIS-IA **helps members create project consortia** via networking events, brokerages and tools such as the Project Idea Tool
- 5 ARTEMIS-IA **executes the ARTEMIS European Technology Platform (ARTEMIS ETP) activities** including the Strategic Research Agenda, as formally recognised by the European Commission

Powered by the era of Digital Transformation, ARTEMIS will continue to support a vision where Europe remains among the world-class leaders in Embedded Intelligence.

ARTEMIS INDUSTRY ASSOCIATION

The Industry Association for a leading position of Europe in Embedded Intelligence



WE EMBODY THE ARTEMIS ETP

*Embedded Intelligent
Systems are the neural
system of society*

What: The ARTEMIS European Technology Platform (ETP) on Embedded Intelligence is recognised by the European Commission.

Why: The ARTEMIS ETP is an industry-driven R&I community and forum for European competitiveness, and a key player in driving research and innovation in Embedded Intelligent Systems. ARTEMIS mobilises its stakeholders to deliver on agreed research priorities and align R&I priorities and information across industry and the EU.

How: ARTEMIS Industry Association executes all activities for the ARTEMIS ETP, is active in community building and develops the ARTEMIS Strategic Research and Innovation Agenda for Embedded Intelligent Systems. This SRA includes R&I priorities for action, to be supported by both private and public funding.

WHAT EMBEDDED INTELLIGENCE IS

*‘ARTEMIS Focus
Areas are Key
Drivers in the Digital
Transformation’*

Embedded Intelligent Systems are everywhere: built into roads, cars, trains, aircrafts , medical devices, homes, offices and factories (industrial automation), payment systems, mobile phones and virtual reality glasses. They form the basis for the development of almost all innovative products and services in both developed and emerging economies.

OUR MAIN FOCUS AREAS

In an industrial context Embedded Intelligent Systems encompass a wider class of systems than Embedded Systems in their most strict definition. ARTEMIS-IA therefore distinguishes the following three focus areas that together create this wider contextual setting:

E&
CPS

Embedded &
Cyber-Physical Systems

IoT

Internet of Things

DP

Digital Platforms

WITH WHOM WE COOPERATE

Technolution is a hightech midsize company based in Gouda, The Netherlands. For nearly 30 years we are frontrunners in the design, development and delivery of hightech solutions for our customers. Since our systems are often based on Cyber-Physical Systems, we see ARTEMIS-IA as an excellent association to build, extend and strengthen our network in the field, ultimately leading to better solutions for our customers.

Bas Dunnebie
– Director Science & Industry at
Technolution B.V.

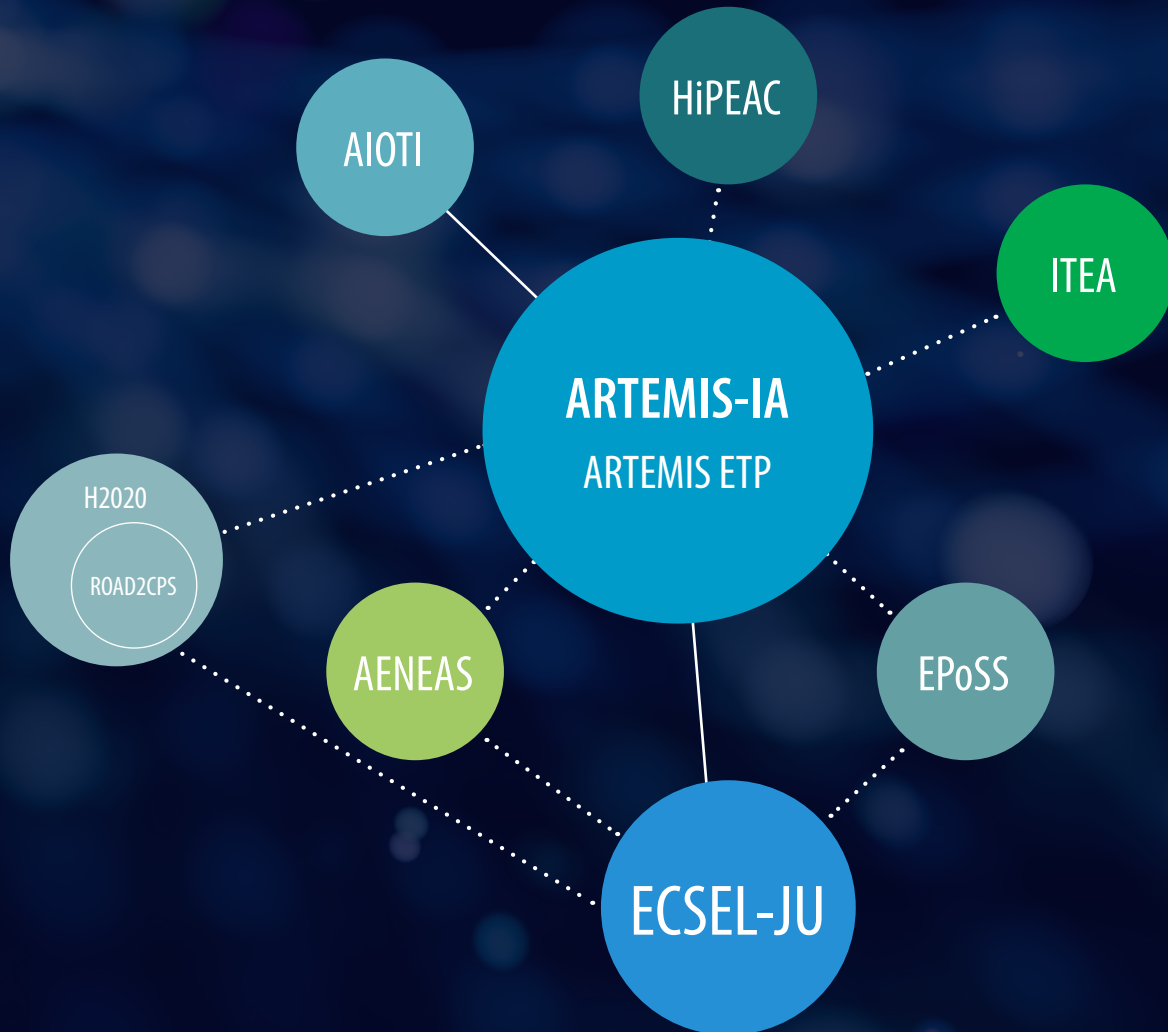
The Association believes that especially by combining technologies, new innovative businesses will emerge that unlock opportunities for value creation in many industrial sectors.

To realise global impact & stimulate innovation, ARTEMIS-IA believes cooperation is key!

The association stimulates cooperation and created:

- + ARTEMIS Working Groups
- + ARTEMIS CoIE and Tool Platform recognition Labels
- + Community building and networking events
- + Cooperation activities with other ETPs, Funding Instruments and governmental institutions

PARTNERS



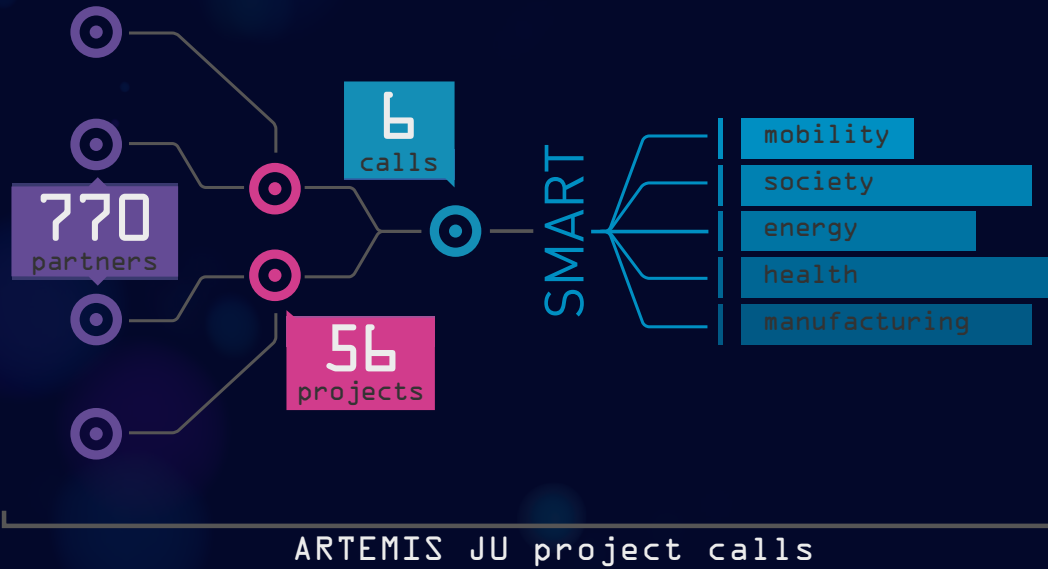
BECOME A MEMBER

*"Our membership of ARTEMIS
IA is a privileged way to interact
with major industrial players as
well as very dynamic SMEs."*

Koen Bertels – Delft University
of Technology

If you are interested in joining an association which stimulates cooperation, innovation and European competitiveness, then team up with the powerful network of ARTEMIS Industry Association!

- + Join more than 170 members
- + Align with industry, research & university
- + Enjoy many networking opportunities
- + Free entrance to ARTEMIS events
- + Receive early information on ECSEL Calls and relevant Horizon 2020 Calls for projects and project achievements
- + Project dissemination possibilities
- + Co-define European Embedded Intelligence R&I strategy
- + Actively join the conversation in one of the chambers & the General Assembly



Community Success

3 Innovation Pilot Projects



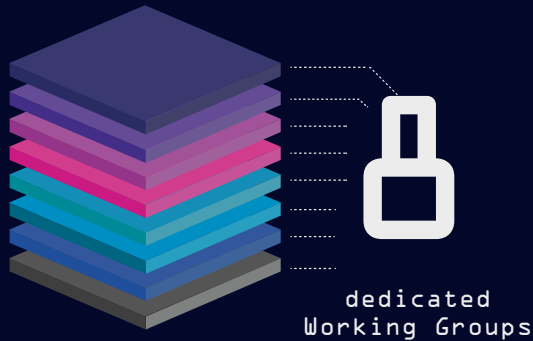
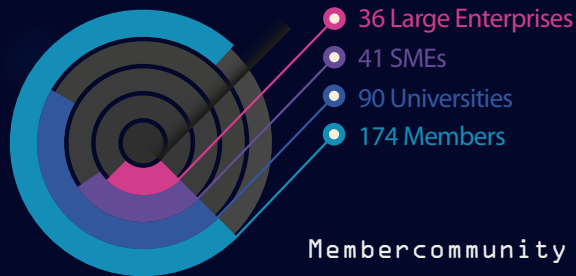
70-100
partners per project

3 Innovation Clusters (CoIE)



59

Partners in 1
multi-domain
platform for
Safety
Process Tools



ARTEMIS-IA

IN

FIGURES

"Managing funding projects needs experience. Managing large funding project needs a lot of experience. ARTEMIS-IA has accompanied all projects and thus has a huge amount of experience in executing funding projects. They support us in many respects providing posters/ leaflets, the organisation of booths at conferences and last, but not least, lobbying at the funding agencies. ... In summary, they play an invaluable role in the entire funding process as a mediator between funding agencies and project partners."

Werner Weber – Infineon, coordination of the largest ARTEMIS project ever: EMC2.

ARTEMIS Industry Association

High Tech Campus 69 - 3

5656 AG Eindhoven

The Netherlands

artemis-ia.eu

T: +31 880 036 188

info@artemis-ia.eu

