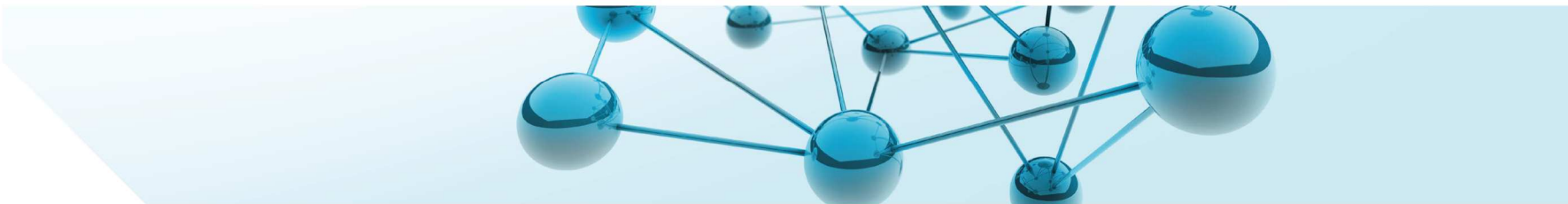




Loughborough University

TAMS
CPS

Trans-Atlantic Modelling and Simulation for Cyber-Physical Systems



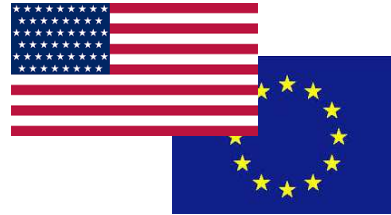
Introduction to TAMS4CPS

Presented by: Prof. Michael Henshaw, Loughborough University



This project has received funding from the European Union's Horizon 2020 Research and Innovation Programme under Grant Agreement No 644821.




Project Partners



US Collaborators

Theme 1	George Mason University
Theme 2	Georgia Institute of Technology
Theme 3	Purdue University
Theme 4	The University of Texas at San Antonio
Theme 5	Stevens Institute

EU Partners

 Loughborough University	Loughborough University, United Kingdom
 STEINBEIS-EUROPA-ZENTRUM	Steinbeis-Europa-Zentrum, Germany
 Newcastle University	Newcastle University, United Kingdom

Project duration: February 2015 - January 2017, 24 months

Total EC contribution: EUR 399.650

GA No.: 644821



Approach & Expected Results

Creation of an **Expert Community**



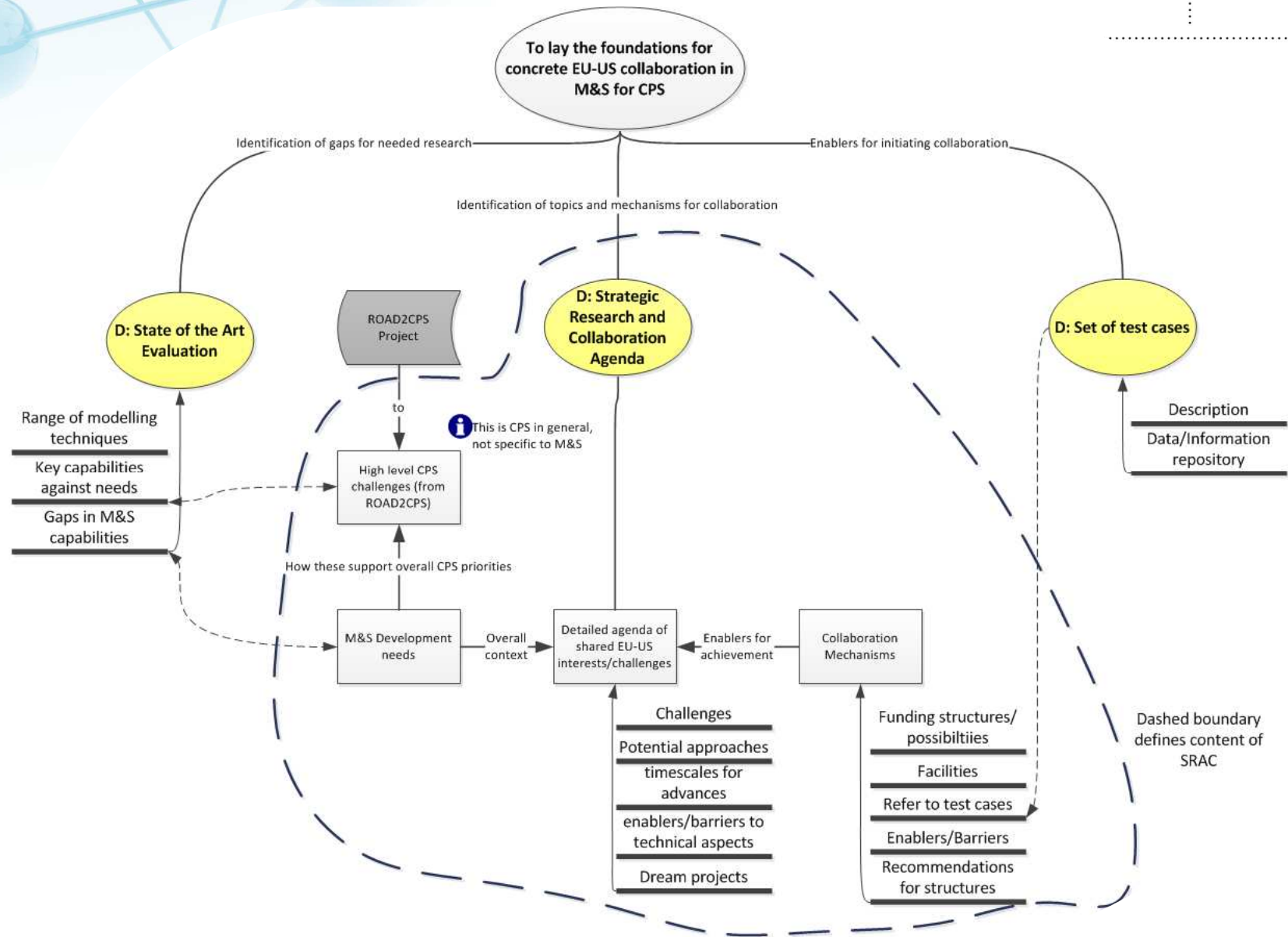
Test cases, webinars, workshops with Experts



Strategic Research Agenda for EU and US Collaboration in modelling and simulation for CPS

Modelling & Simulation Themes

1. Architectures Principles and models for Autonomous Safe and secure CPS
2. System Design, modelling and virtual engineering for CPS
3. Real time modelling for Autonomous adaptive and cooperative CPS
4. Model-Based Systems Engineering (MBSE) applied to Computing Platforms and energy management
5. Integration of socio/legal/governance models within modelling framework



Consortium members here today:

- Michael Henshaw: M.J.d.Henshaw@lboro.ac.uk
- John Fitzgerald: john.fitzgerald@newcastle.ac.uk
- Meike Reimann: reimann@steinbeis-europa.de

Follow us on twitter: @TAMS4CPS

Join our experts community:

<http://www.tams4cps.eu/project-details/expert-community/>.